

09/08/99

31-MAR-2021 09:46 S:\DDC\District 1\Gaston\SS-6012E SR2519(ArmstrongFordRd.)\proj\SS-6012E.Rdy.tsh.dgn \$\$\$USERNAME\$\$\$

CONTRACT: DL00233 **TIP PROJECT: SS-6012E**

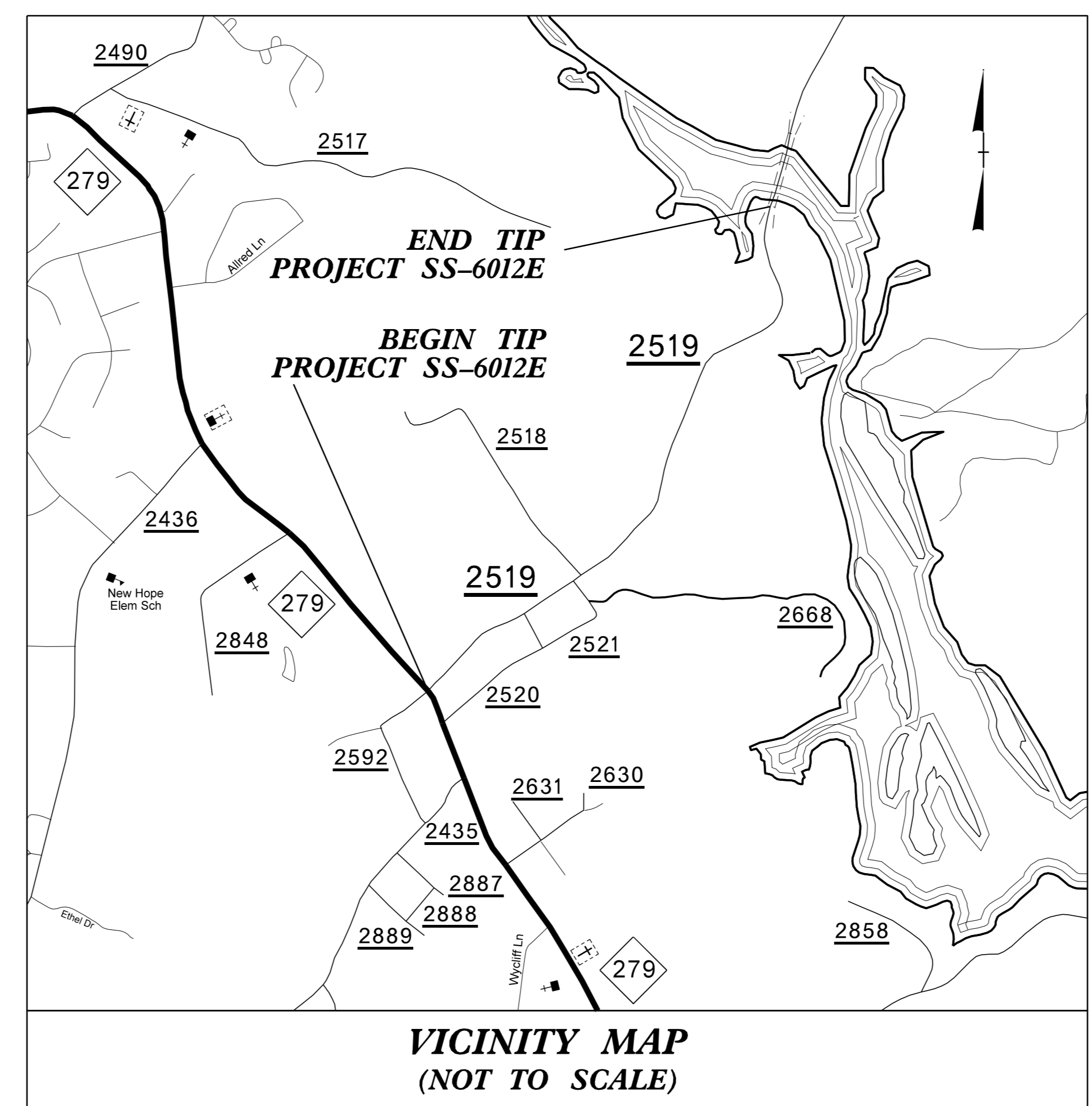
STATE OF NORTH CAROLINA
DIVISION OF HIGHWAYS

GASTON COUNTY

**LOCATION: SR 2519 (ARMSTRONG FORD RD.) FROM
MILEPOST 0.00 TO MILEPOST 1.174.**

**TYPE OF WORK: INSTALLATION OF CENTERLINE AND EDGELINE
MILLED SINUSOIDAL RUMBLE STRIPS,
PAVEMENT MARKINGS AND MARKERS.**

STATE	STATE PROJECT REFERENCE NO.	SHEET NO.	TOTAL SHEETS
N.C.	SS-6012E	1	
STATE PROJ. NO.	F.A. PROJ. NO.	DESCRIPTION	
49129.1.1	N/A	PE	
49129.3.1	N/A	CONST	



DOCUMENT NOT CONSIDERED FINAL
UNLESS ALL SIGNATURES COMPLETED

PROJECT LENGTH

LENGTH OF ROADWAY TIP PROJECT SS-6012E = 1.180 MILES
TOTAL LENGTH OF TIP PROJECT SS-6012E = 1.180 MILES

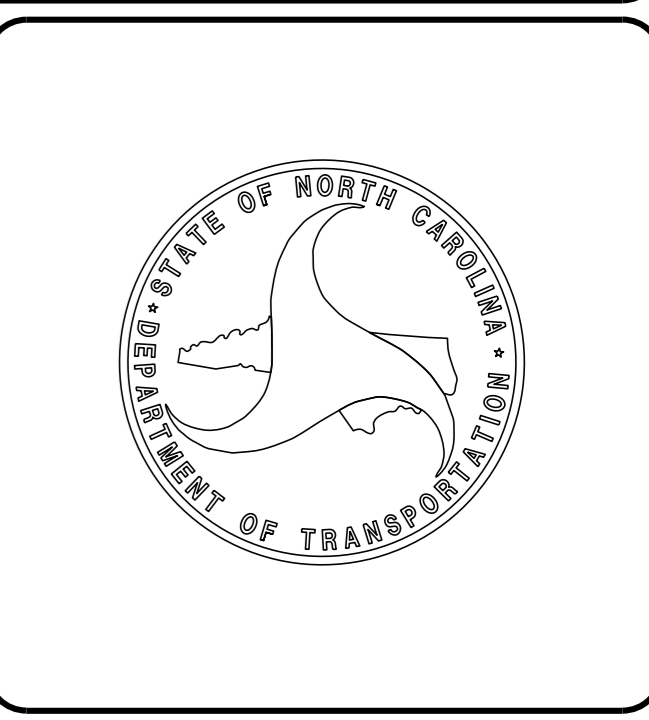
Prepared in the Office of:
DIVISION OF HIGHWAYS
1000 Birch Ridge Dr., Raleigh NC, 27610

2018 STANDARD SPECIFICATIONS	
RIGHT OF WAY DATE: N/A	MICHAEL L. POE, PE PROJECT ENGINEER
LETTING DATE: APRIL 27TH, 2021	JOSHUA S. CARPENTER PROJECT DESIGN ENGINEER

**ROADWAY DESIGN
ENGINEER**

DocuSigned by:
M L Poe
101E124BED860A

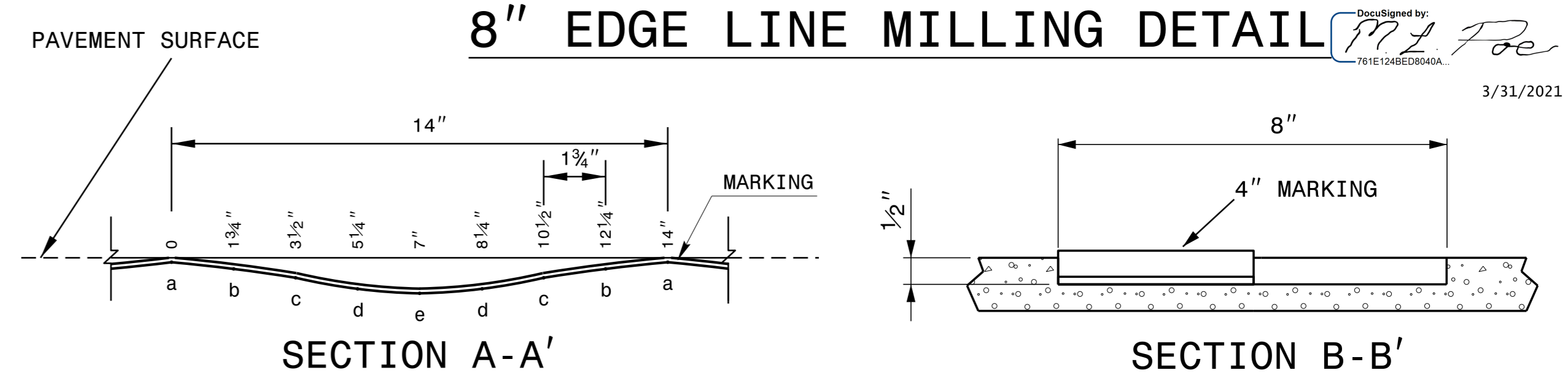
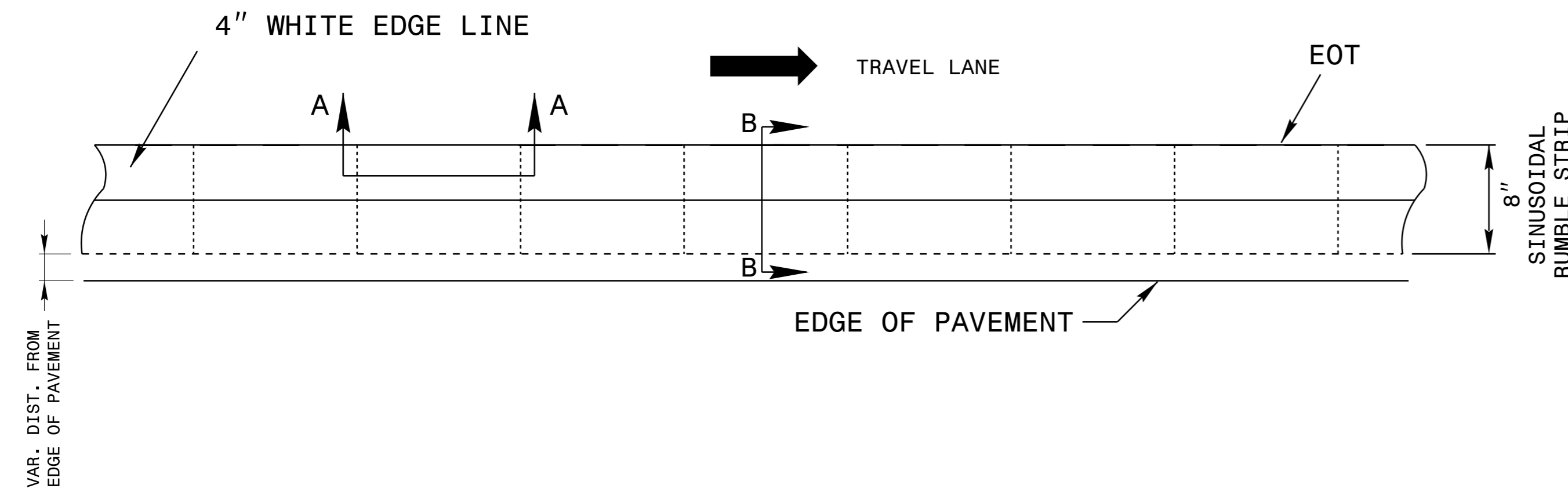
3/31/2021



8" & 14" SINUSOIDAL MILLED RUMPLE STRIP DETAIL

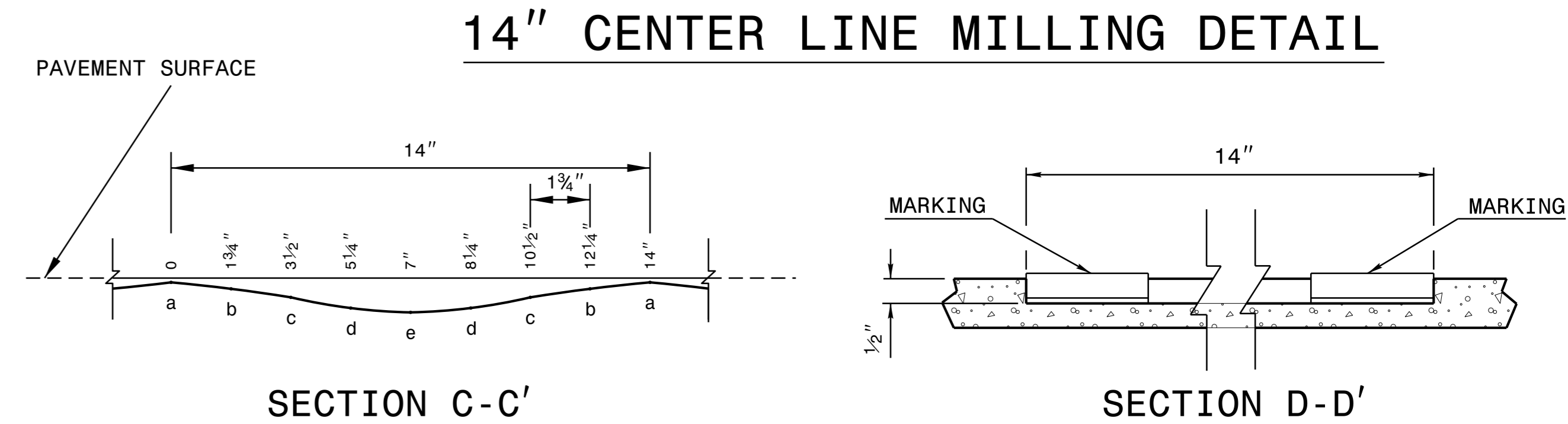
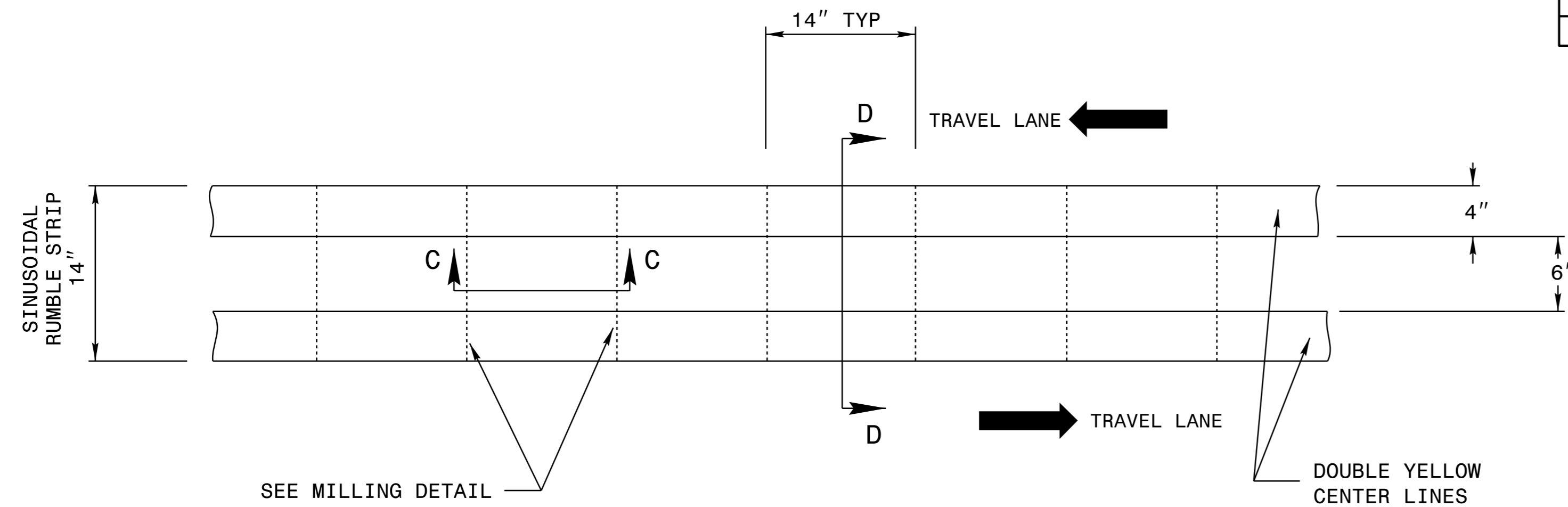


8" EDGE LINE TREATMENT



LOCATION	DEPTH	
	MIL	INCHES
a	62.5	1/16"
b	156	5/32"
c	281	9/32"
d	438	7/16"
e	500	1/2"

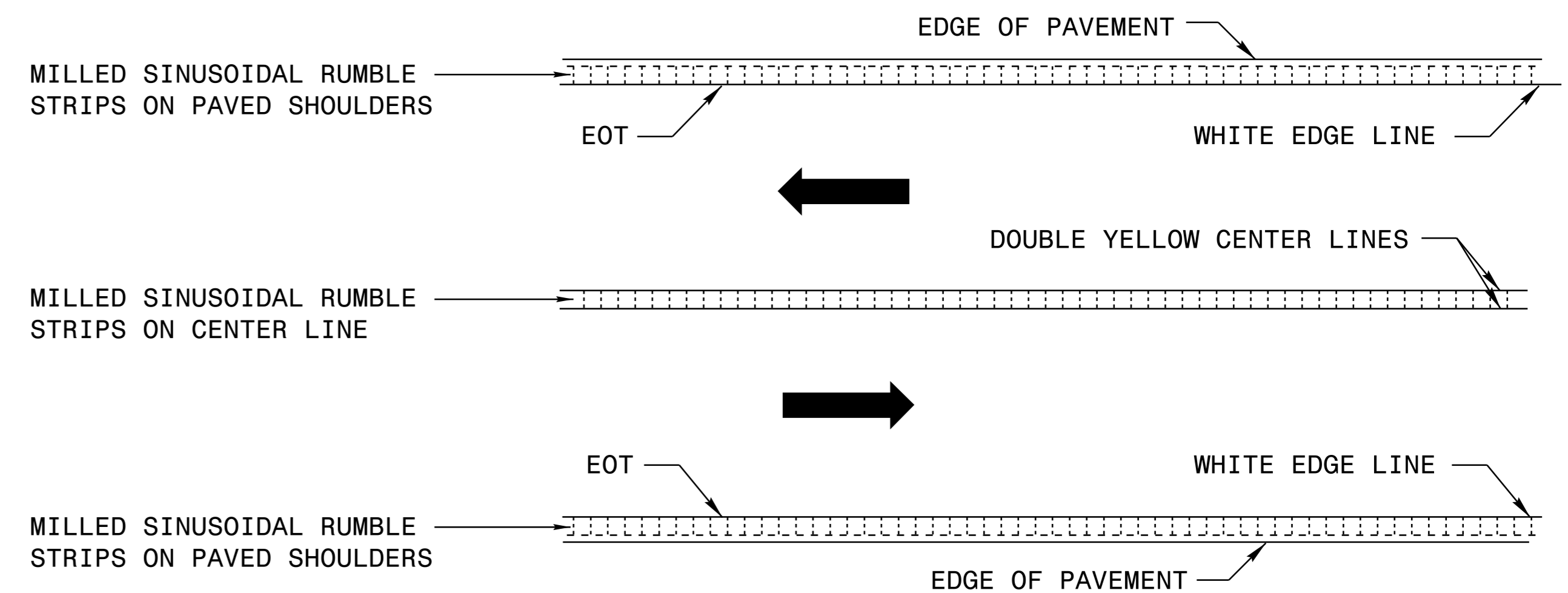
14" CENTER LINE TREATMENT



NOTES:

- 1) INSTALL SINUSOIDAL RUMBLE STRIPS (CENTERLINE & EDGELINE) STARTING AT APPROX. MILE POST 0.34 (SR 2518) AND ENDING AT APPROX. MILE POST 1.18 (BRIDGE OVER CATAWBA RIVER).
- 2) INSTALL THERMOPLASTIC PAVEMENT MARKINGS AND MARKERS BEGINNING AT MILE POST 0.00 (NC 279) AND ENDING AT APPROX. MILE POST 1.18 (BRIDGE OVER CATAWBA RIVER).
- 3) PAVEMENT MARKING MATERIAL SHALL BE THERMOPLASTIC.
- 4) USING A VACUUM, REMOVE ALL DEBRIS FROM THE MILLINGS JUST PRIOR TO PLACING ANY PAVEMENT MARKINGS
- 5) ENSURE GLASS BEADS ARE SPREAD UNIFORMLY OVER THE ENTIRE SURFACE OF THE PAVEMENT MARKING MATERIAL.
- 6) PLACE MILLED SINUSODIAL RUMBLES AS SHOWN ABOVE IN THIS DETAIL ON BOTH SHOULDERS IN BOTH DIRECTIONS.
- 7) IF SNOWPLOWABLE MARKERS ARE TO BE INSTALLED IN THE CENTERLINE, SKIP A 24" SPACE IN THE RUMBLE STRIPES EVERY 40' OR 80' ACCORDING TO STD. 1250.01.

LANE TREATMENT



* DETAIL NOT TO A SCALE

5/14/99
3:\MAP-20210514\mstronngFor.dfd\proj\SS-6012E_Rdy.dtl.2.dgn